

# KSA East End Park Trail Network

Orange = Improved Trails  
Yellow = Natural Path  
Red = Benches/Tables

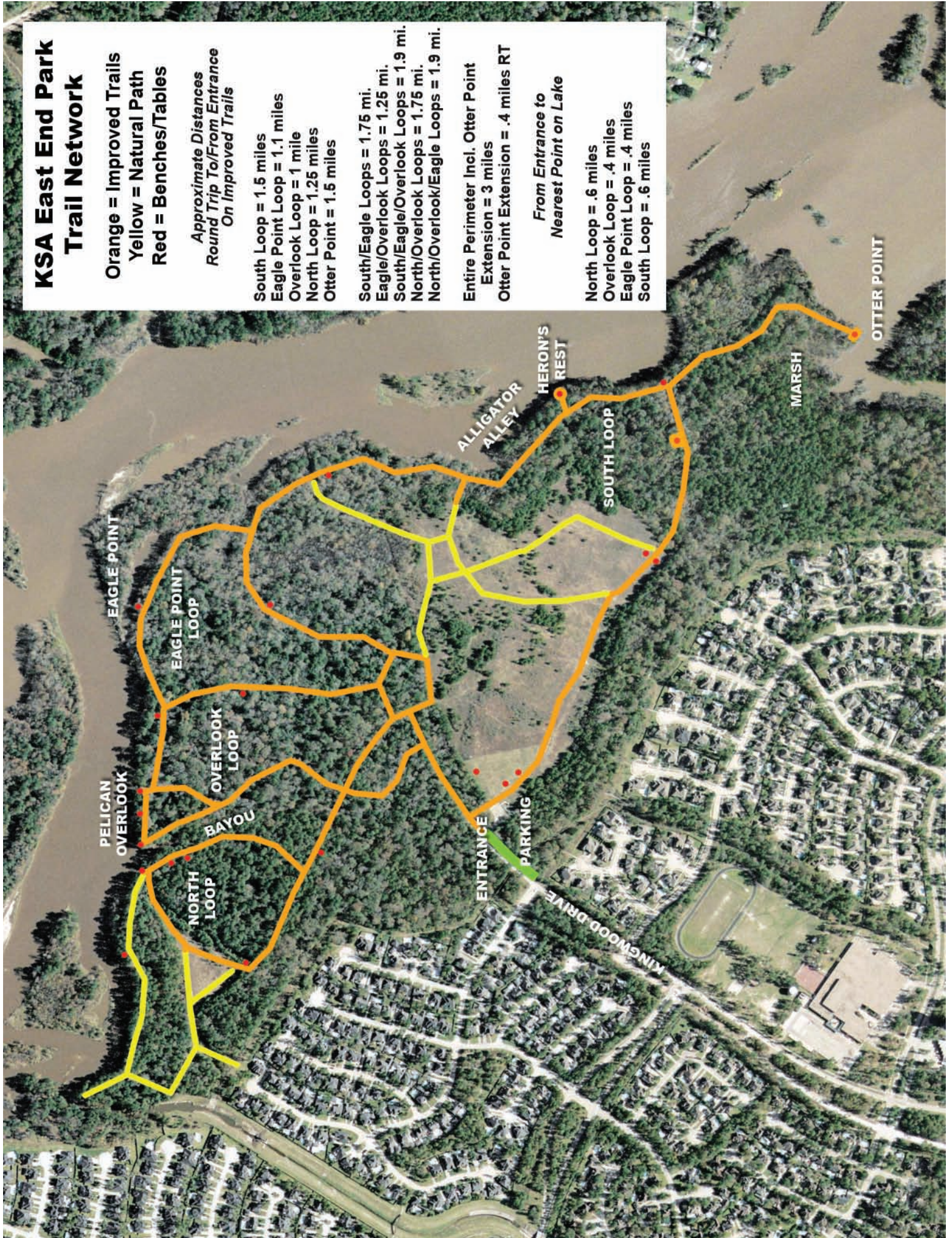
*Approximate Distances  
Round Trip To/From Entrance  
On Improved Trails*

South Loop = 1.5 miles  
Eagle Point Loop = 1.1 miles  
Overlook Loop = 1 mile  
North Loop = 1.25 miles  
Otter Point = 1.5 miles  
South/Eagle Loops = 1.75 mi.  
Eagle/Overlook Loops = 1.25 mi.  
South/Eagle/Overlook Loops = 1.9 mi.  
North/Overlook Loops = 1.75 mi.  
North/Overlook/Eagle Loops = 1.9 mi.

Entire Perimeter Incl. Otter Point  
Extension = 3 miles  
Otter Point Extension = .4 miles RT

*From Entrance to  
Nearest Point on Lake*

North Loop = .6 miles  
Overlook Loop = .4 miles  
Eagle Point Loop = .4 miles  
South Loop = .6 miles



# ***East End Park Rules***

East End Park is a private park inside the Houston city limits. It is owned and operated by the Kingwood Service Association for the benefit of all Kingwood residents. Please observe all KSA rules, especially those below, to ensure everyone has a safe and enjoyable experience.

## ***Dogs***

People are encouraged to walk their dogs here. However, both KSA rules and City law require leashes. Police may ticket violators, especially those who persist in being a nuisance. Exercise common sense to keep dogs welcome in this park. If your dog threatens others or if people complain about it, remove it. Please remove all droppings from trails. And please keep dogs out of the meadow from November through March; several endangered bird species winter here. Also, if your dog likes to swim in the lake, beware of alligators – especially from June through early September – alligator nesting season. Several dogs have been attacked by gators during this period.

## ***Prohibited Activities***

The following activities pose a danger to the park, people or wildlife, and are prohibited:

### ***ATVs***

These trails were designed for hiking, jogging and biking. Motorized vehicles destroy them; they create ruts that make trails difficult to walk on. ATVs also endanger people who may be just out of sight around a tight corner!

### ***Hunting***

Many types of wildlife use East End Park as a refuge. Fishing is permitted, but please don't harm, harass, or attempt to catch anything else. Again, you are inside the City. Discharging firearms is against the law and could land you in jail.

### ***Camping***

Coyotes, bobcats, alligators, poisonous snakes, bats and other wild animals call this park home. So do many mosquitoes, deer flies and other man-eating insects. Crocodile Dundee wouldn't camp here; you shouldn't either.

### ***Fires and Fireworks***

Grass and forest fires can spread out of control rapidly. They pose a danger to surrounding homes. They also destroy habitat for wildlife.

### ***Littering***

To preserve the natural experience for your neighbors, please take out anything you bring into the park or place it in one of the trash barrels.

## ***Hours***

This park is open from dawn to dusk. It is closed at night. After dark, police will consider you a trespasser. The animals and mosquitoes may consider you dinner.

For a complete listing of all park rules, see:  
*kingwoodserviceassociation.org*